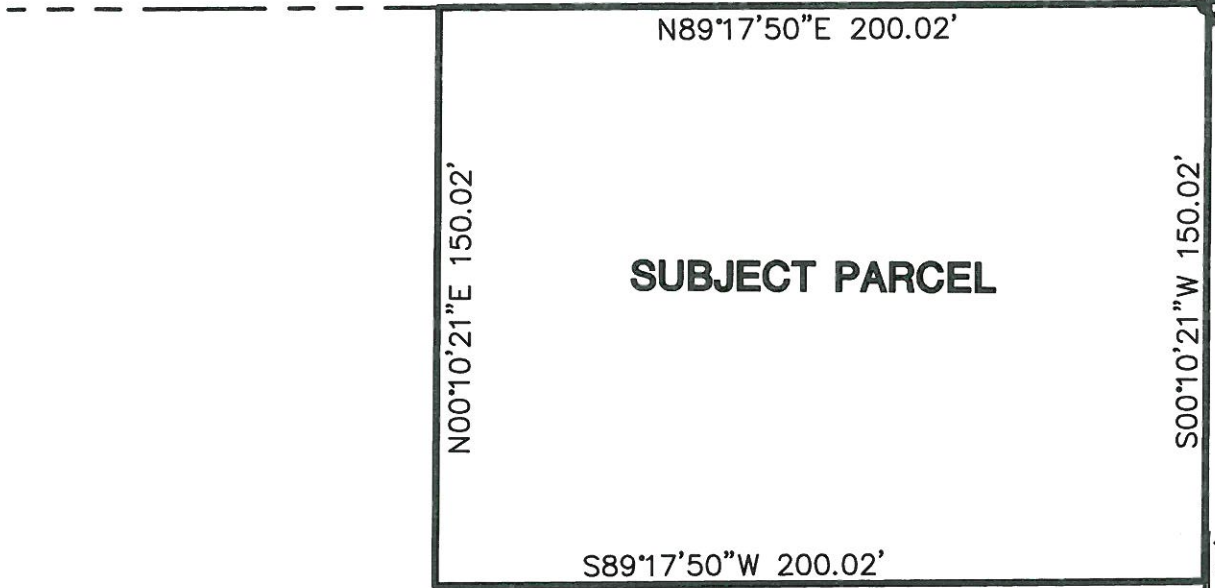


EAGLE CROSSING WINDSOR METROPOLITAN DISTRICT 1

CENTER QUARTER CORNER
SECTION 35, T6N, R68W



POINT OF BEGINNING

SUBJECT PARCEL

S89°17'50\"W 200.02'

S00°10'21\"W 2623.47'
BASIS OF BEARINGS

SOUTH QUARTER CORNER
SECTION 35, T6N, R68W



scale 1"=50' feet

EXHIBIT A
DATE: AUG. 8, 2014
JOB NO. 0803.0200.00
SHEET 1 OF 11

TST TST, INC. CONSULTING ENGINEERS

760 Whalers Way, Bldg C, Suite 200
Fort Collins, Colorado
Phone: 970.226.0557
Fax: 970.226.0204

EAGLE CROSSING WINDSOR METROPOLITAN DISTRICT 2

CURVE TABLE

CURVE	RADIUS	LENGTH	DELTA	BEARING	CHORD
C1	400.00'	186.55'	26°43'17"	N75° 49' 12"E	184.86'
C2	756.00'	833.18'	63°08'42"	N31° 24' 00"W	791.65'

LINE TABLE

LINE	LENGTH	DIRECTION
L1	200.02	S89° 17' 50"W
L2	150.02	N0° 10' 21"E
L3	277.88	S89° 17' 50"W
L4	5.31	S61° 56' 20"W
L5	96.87	S61° 56' 16"W
L6	66.35	S46° 28' 57"W
L7	64.07	S33° 02' 28"W
L8	212.04	S23° 07' 27"W
L9	52.35	S48° 26' 03"W
L10	366.65	S70° 06' 24"W
L11	253.00	S2° 51' 04"E
L12	923.63	N89° 10' 50"E
L13	144.97	S27° 32' 25"E
L14	309.65	S0° 49' 10"E
L15	269.63	N89° 10' 50"E
L16	189.72	N0° 10' 21"E
L17	533.97	N62° 58' 21"W
L18	46.62	S27° 01' 39"W
L19	296.59	S0° 21' 20"E
L20	535.78	S89° 38' 40"W
L21	203.89	N0° 10' 21"E

CENTER QUARTER CORNER
SECTION 35, T6N, R68W

POINT OF
COMMENCEMENT

S00°10'21"W
150.02'

POINT OF
BEGINNING

SUBJECT PARCEL

TRACT B
TRACT A

N89°10'50"E 1103.58'

STEEPLECHASE DRIVE

S00°10'21"W 2623.47'
BASIS OF BEARINGS

SOUTH QUARTER CORNER
SECTION 35, T6N, R68W



scale 1"=400' feet

EXHIBIT A
DATE: AUG. 8, 2014
JOB NO. 0803.0200.00
SHEET 3 OF 11

TST TST, INC. CONSULTING ENGINEERS

760 Whalers Way, Bldg C, Suite 200
Fort Collins, Colorado
Phone: 970.226.0557
Fax: 970.226.0204

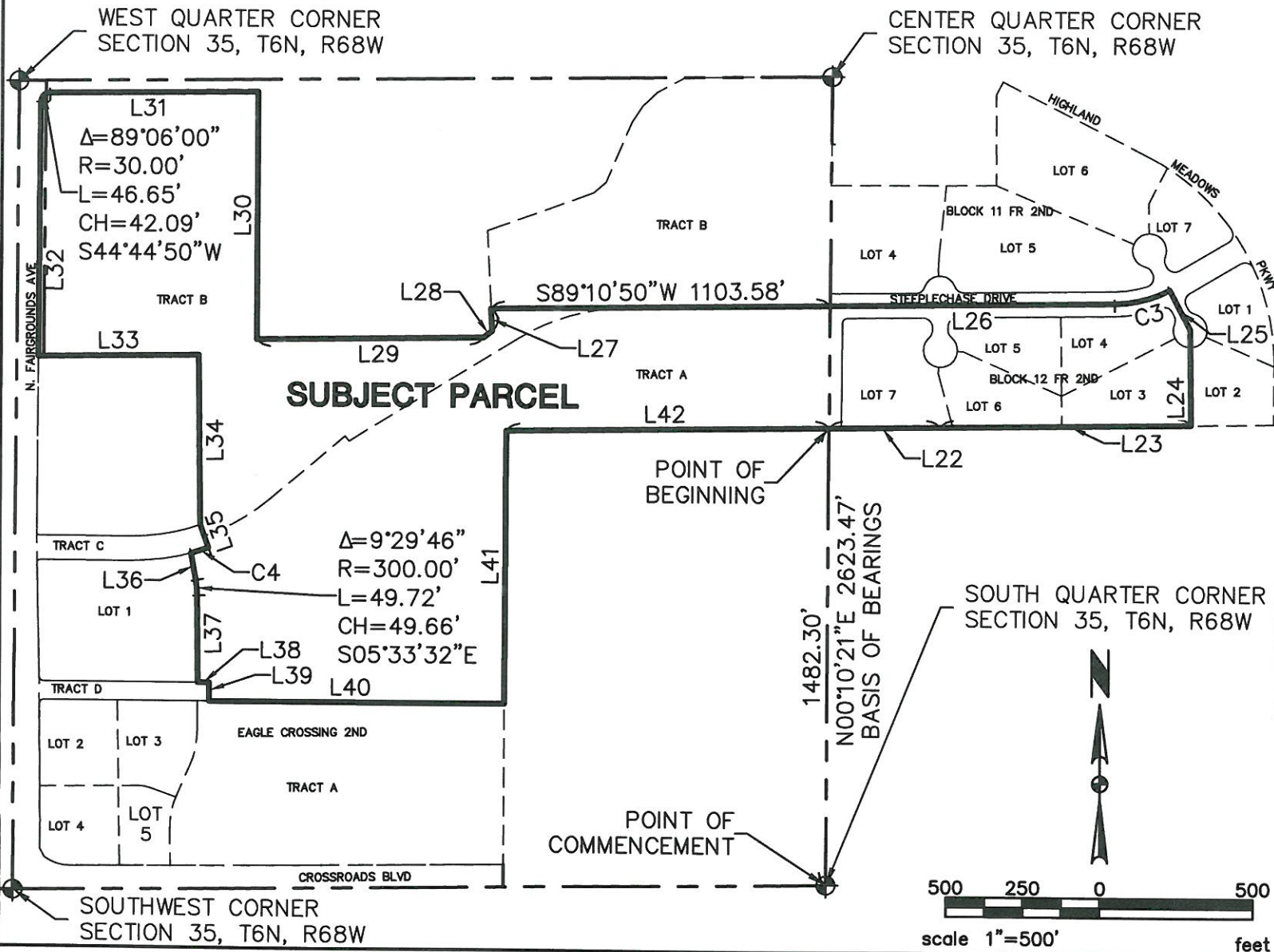
EAGLE CROSSING WINDSOR METROPOLITAN DISTRICT 3

CURVE TABLE

CURVE	RADIUS	LENGTH	DELTA	BEARING	CHORD
C3	400.00'	186.55'	26°43'17"	S75° 49' 12"W	184.86'
C4	740.00'	59.93'	4°38'26"	S72° 32' 59"W	59.92'

LINE TABLE

LINE	LENGTH	DIRECTION
L22	360.01	N89° 11' 17"E
L23	815.53	N89° 10' 50"E
L24	309.65	N0° 49' 10"W
L25	144.97	N27° 32' 25"W
L26	923.63	S89° 10' 50"W
L27	72.26	S2° 51' 04"E
L28	35.16	S52° 32' 29"W
L29	736.26	S89° 08' 52"W
L30	802.11	N0° 03' 25"W
L31	679.95	S89° 17' 50"W
L32	824.49	S0° 11' 50"W
L33	522.90	N89° 08' 52"E
L34	551.53	S0° 51' 08"E
L35	80.00	S19° 46' 14"E
L36	89.19	S10° 18' 25"E
L37	283.41	S0° 48' 39"E
L38	37.22	S89° 57' 36"E
L39	60.00	S0° 02' 24"W
L40	960.46	S89° 57' 36"E
L41	887.82	N0° 10' 21"E
L42	1050.00	N89° 11' 21"E



1482.30'
N00°10'21"E 2623.47'
BASIS OF BEARINGS

SOUTH QUARTER CORNER
SECTION 35, T6N, R68W

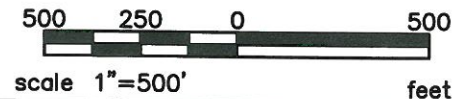
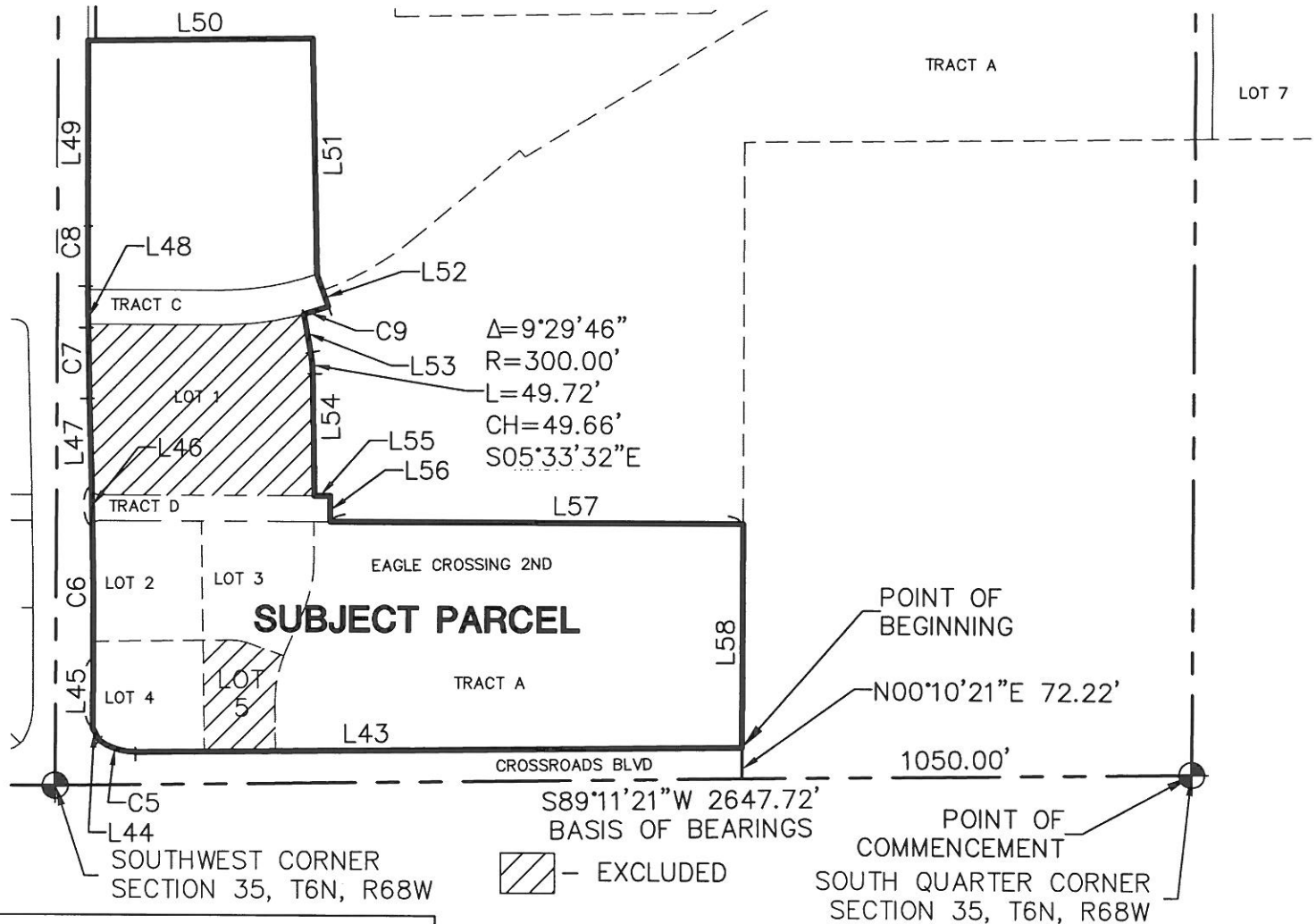


EXHIBIT A
DATE: AUG. 8, 2014
JOB NO. 0803.0200.00
SHEET 6 OF 11

TST TST, INC. CONSULTING ENGINEERS
760 Whalers Way, Bldg C, Suite 200
Fort Collins, Colorado
Phone: 970.226.0557
Fax: 970.226.0204

K:\803\0200\05 Drawings\Exhibits\Windsor Metro District Legals

EAGLE CROSSING WINDSOR METROPOLITAN DISTRICT 4



LINE TABLE		
LINE	LENGTH	DIRECTION
L43	1411.36	S89° 19' 54\"W
L44	31.63	N27° 24' 20\"W
L45	166.00	N0° 11' 50\"E
L46	98.82	N1° 13' 35\"W
L47	200.11	N1° 25' 33\"W
L48	96.06	N0° 33' 54\"W
L49	435.48	N0° 11' 50\"E
L50	522.90	N89° 08' 52\"E
L51	551.53	S0° 51' 08\"E
L52	80.00	S19° 46' 14\"E
L53	89.19	S10° 18' 25\"E
L54	283.41	S0° 48' 39\"E
L55	37.22	S89° 57' 36\"E
L56	60.00	S0° 02' 24\"W
L57	960.46	S89° 57' 36\"E

CURVE TABLE					
CURVE	RADIUS	LENGTH	DELTA	BEARING	CHORD
C5	140.00'	90.30'	36°57'23\"	N72° 11' 25\"W	88.74'
C6	14195.00'	303.29'	1°13'27\"	N0° 24' 54\"W	303.29'
C7	14055.00'	163.12'	0°39'54\"	N1° 05' 36\"W	163.12'
C8	14055.00'	138.96'	0°33'59\"	N0° 05' 10\"W	138.96'
C9	740.00'	59.93'	4°38'26\"	S72° 32' 59\"W	59.92'

- EXCLUDED

POINT OF BEGINNING
 N00°10'21\"E 72.22'
 1050.00'
 POINT OF COMMENCEMENT
 SOUTH QUARTER CORNER SECTION 35, T6N, R68W

S89°11'21\"W 2647.72'
 BASIS OF BEARINGS

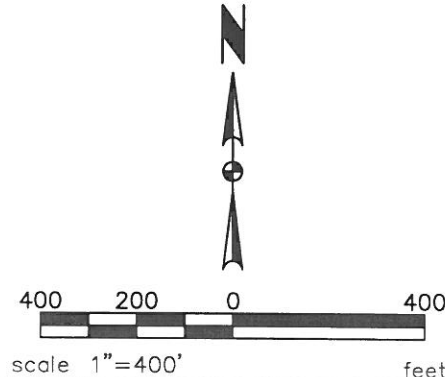


EXHIBIT A
 DATE: AUG. 8, 2014
 JOB NO. 0803.0200.00
 SHEET 9 OF 11

TST TST, INC. CONSULTING ENGINEERS
 760 Whalers Way, Bldg C, Suite 200
 Fort Collins, Colorado
 Phone: 970.226.0557
 Fax: 970.226.0204

K:\803\0200\05 Drawings\Exhibits\Windsor Metro District Legals